

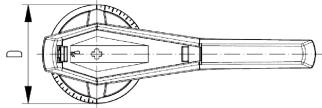
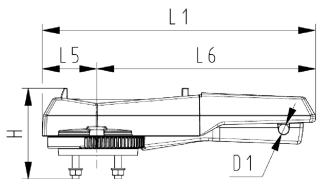
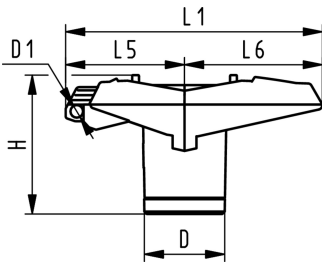


Multifunctional lever 567/578 red
With ratchet settings lockable

Note:

Code 161 486 690 is compatible with the Ball Valve Type 546, dimension d90 DN80

Code 161 486 691 is compatible with the Ball Valve Type 546, dimension d110 DN100 - d140 DN125



d-d (mm)	DN-DN (mm)	Multifunctional lever Code
63 - 90	50 - 80	161 486 690
110 - 140	100 - 125	161 486 691
160	150	161 486 694
225	200	161 486 695
280 - 315	250 - 300	161 486 697

The technical data are not binding. They neither constitute expressly warranted characteristics nor guaranteed properties nor a guaranteed durability. They are subject to modification. Our General Terms of Sale apply.

Georg Fischer Piping Systems Ltd, Postfach, CH-8201 Schaffhausen/Switzerland

Phone +41 -(0)52-631 1111

e-mail: info.ps@georgfischer.com

Internet: <http://www.gfps.com>