



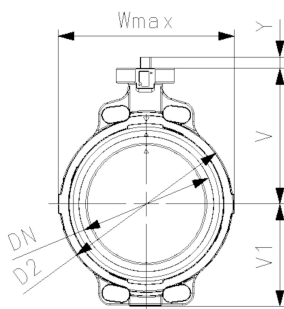
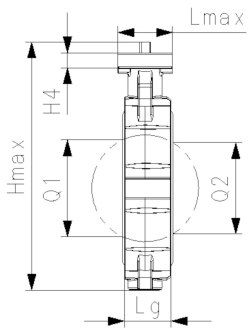
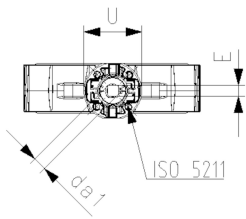
Wafer-style intermediate installation butterfly valve type 567 PVC-U
Bare shaft
Flange standard metric/ANSI/BS/JIS

Model:

- Up to DN 300: Overall length according to EN558 (DN 50-200: line 25, DN250, 300 line 16), ISO 5752
- Connecting dimension: ISO 7005 PN 10, EN 1092 PN 10, DIN 2501 PN 10, ANSI/ASME B 16.5 Class 150, BS 1560: 1989, BS 4504, JIS B 2220
- Interface F07 for the dimensions DN50-200 according to DIN/ISO 5211
- Interface F10 for the dimensions DN250-300 according to DIN/ISO 5211

Note:

For some material combination (e.g. DN300 valves with PE/PP pipes) special flange adapters are needed. Please check the "Perfect flange connection tool" on www.gfps.com



d (mm)	Size (inch)	DN (mm)	PN (bar)	kv-value ($\Delta p=1$ bar) (L/min)	EPDM Code	SP	Weight (kg)	FKM Code	SP	Weight (kg)
63	2	50	10	740	161 567 802	1	0.778	161 567 822	1	0.787
75	2 ½	65	10	1500	161 567 803	1	0.921	161 567 823	1	0.895
90	3	80	10	2400	161 567 804	1	1.052	161 567 824	1	1.068
110	4	100	10	3800	161 567 805	1	1.641	161 567 825	1	2.092
140	5	125	10	8600	161 567 806	1	2.266	161 567 826	1	2.236
160	6	150	10	11400	161 567 807	1	3.179	161 567 827	1	3.238
225	8	200	10	19900	161 567 808	1	5.063	161 567 828	1	5.127
280	10	250	10	34000	161 567 809	1	11.588	161 567 829	1	11.735
315	12	300	10	50000	161 567 810	1	16.050	161 567 830	1	15.936

d (mm)	Hmax (mm)	Lmax (mm)	Wmax (mm)	U (mm)	V (mm)	H4 (mm)	V1 (mm)	Lg (mm)	D2 (mm)	Q1 (mm)	Q2 (mm)	k (mm)	Y (mm)	E (mm)
63	238.3	84.8	118.4	90	133.3	23	78.8	45	104	40		125	26.2	11
75	251.2	84.8	132.5	90	139.9	23	85.1	46	115	54	35	145	26.2	11
90	263.0	84.8	136.8	90	145.6	23	91.2	49	131	67	50	160	26.2	11
110	287.5	84.8	161.0	90	166.4	23	105.7	56	161	88	74	180	15.4	14
140	314.2	84.8	187.0	90	180.0	23	118.8	64	187	113	97	210	15.4	14
160	338.3	84.8	215.0	90	189.0	23	130.9	72	215	139	123	240	18.4	17
225	387.2	84.8	267.0	90	210.5	23	158.3	73	267	178	169	295	18.4	17
280	508.9	125.0	329.0	125	262.6	23	206.1	113	329	210	207	350	40.2	22
315	553.3	125.0	380.4	125	284.3	23	228.8	113	379	256	253	400	40.2	22

d (mm)	da1 (mm)
63	13.5
75	13.5
90	13.5
110	17.3
140	17.3
160	21.1
225	21.1
280	27.0
315	27.0

The technical data are not binding. They neither constitute expressly warranted characteristics nor guaranteed properties nor a guaranteed durability. They are subject to modification. Our General Terms of Sale apply.

Data sheet

valid from: 6/29/23



Phone +41 -(0)52-631 1111

e-mail: info.ps@georgfischer.com

Internet: <http://www.gfps.com>