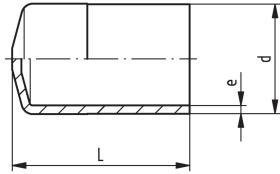


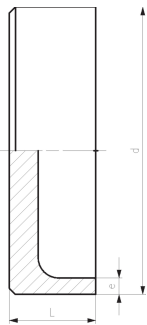
## SYGEF Standard end cap SDR21/PN16

### Model:

- Material: PVDF
- Type A: injection molded
- Type B: machined, incl. facing mark (must not be exceeded)



Type A



Type B

d (mm)	PN (bar)	FM	Type	Code	L (mm)	e (mm)
20	16	BCF, IR	A	<b>735 968 006</b>	47	1.9
25	16	BCF, IR	A	<b>735 968 007</b>	47	1.9
32	16	BCF, IR	A	<b>735 968 008</b>	52	2.4
40	16	IR	B	<b>735 968 309</b>	30	2.4
50	16	IR	B	<b>735 968 310</b>	30	3.0
63	16	IR	B	<b>735 968 311</b>	30	3.0
75	16	IR	B	<b>735 968 312</b>	30	3.6
90	16	IR	B	<b>735 968 313</b>	30	4.3
110	16	IR	B	<b>735 968 314</b>	45	5.3
140	16	IR	B	<b>735 968 316</b>	45	6.7
160	16	IR	B	<b>735 968 317</b>	46	7.7
200	16	IR	B	<b>735 968 319</b>	54	9.6
225	16	IR	B	<b>735 968 320</b>	57	10.8

The technical data are not binding. They neither constitute expressly warranted characteristics nor guaranteed properties nor a guaranteed durability. They are subject to modification. Our General Terms of Sale apply.

Georg Fischer Piping Systems Ltd, Postfach, CH-8201 Schaffhausen/Switzerland

Phone +41 -(0)52-631 1111

e-mail: [info.ps@georgfischer.com](mailto:info.ps@georgfischer.com)

Internet: <http://www.gfps.com>