



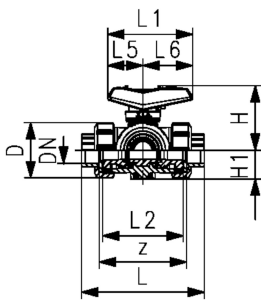
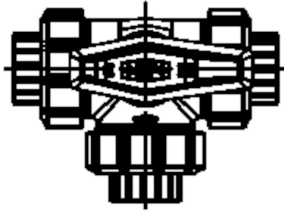
**PROGEF Standard 3-Way ball valve type 543 Pro**  
**Horizontal/T-port**  
**With fusion sockets metric**

**Model:**

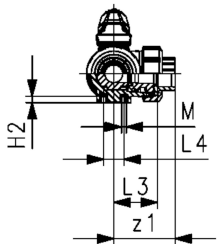
- Material: PP-H
- Lockable lever as standard (DN10-DN50)
- For easy installation and removal (valve end and union nut are compatible with type 546)
- Ball seat PTFE
- Angle of operation 360° without turn limiter
- Turn limiter 90° enclosed, in different positions usable as a clip-on ring
- Integrated stainless steel mounting inserts
- Delivery status A-B-C opened, see flow scheme
- Z-dimension, valve end and union nut are compatible with type 543 (1stGeneration)

**Option:**

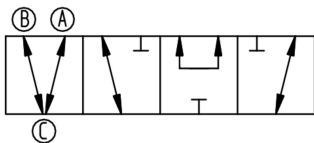
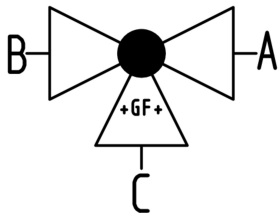
- Interface-module with position feedback sensor, incl. LED feedback (DN10-50)
- Manual spring return lever ("Dead man") (DN10-25)
- Pneumatic or electric actuators from GF
- Individual configuration of the valve possible



d (mm)	DN (mm)	Size (inch)	PN (bar)	kv-value ( $\Delta p=1$ bar) (l/min)	EPDM Code	Weight (kg)	FKM Code	Weight (kg)
16	10	3/8	10	140	<b>167 543 201</b>	0.160	<b>167 543 211</b>	0.160
20	15	1/2	10	200	<b>167 543 202</b>	0.164	<b>167 543 212</b>	0.164
25	20	3/4	10	470	<b>167 543 203</b>	0.236	<b>167 543 213</b>	0.236
32	25	1	10	793	<b>167 543 204</b>	0.372	<b>167 543 214</b>	0.357
40	32	1 1/4	10	1290	<b>167 543 205</b>	0.631	<b>167 543 215</b>	0.609
50	40	1 1/2	10	1910	<b>167 543 206</b>	0.936	<b>167 543 216</b>	0.898
63	50	2	10	3100	<b>167 543 207</b>	1.822	<b>167 543 217</b>	1.857



d (mm)	D (mm)	H (mm)	H1 (mm)	H2 (mm)	L (mm)	L1 (mm)	L2 (mm)	L3 (mm)	L4 (mm)	L5 (mm)	L6 (mm)	M (mm)	z (mm)	z1 (mm)	closest inch (inch)
16	50	61	28	8	110	82	72	36	25	35	47	6	82	41	3/8
20	50	61	28	8	112	82	72	36	25	35	47	6	82	41	1/2
25	58	74	32	8	129	106	85	43	25	44	62	6	97	49	3/4
32	68	80	36	8	146	106	98	49	25	44	62	6	110	55	1
40	84	95	45	9	170	131	118	59	45	57	74	8	132	66	1 1/4
50	97	102	51	9	193	131	135	68	45	57	74	8	151	76	1 1/2
63	124	117	65	9	244	152	176	88	45	66	86	8	188	94	2



The technical data are not binding. They neither constitute expressly warranted characteristics nor guaranteed properties nor a guaranteed durability. They are subject to modification. Our General Terms of Sale apply.

# Data sheet

valid from: 2/22/24



---

Georg Fischer Piping Systems Ltd, Postfach, CH-8201 Schaffhausen/Switzerland Phone +41 -(0)52-631 1111 e-mail:  
info.ps@georgfischer.com Internet: <http://www.gfps.com>