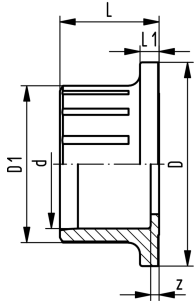
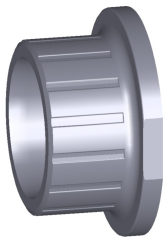


Data sheet

valid from: 11/27/22



ABS valve end 546 Pro and 543 Pro (G20) With solvent cement socket metric

d (mm)	PN (bar)	Code	Weight (kg)	D1 (mm)	z (mm)	L (mm)	D (mm)	L1 (mm)
16	10	169 480 775	0.006	23	4	18	38	4
20	10	169 480 776	0.008	27	4	20	38	4
25	10	169 480 777	0.012	33	4	22	44	5
32	10	169 480 778	0.019	41	4	26	53	5
40	10	169 480 779	0.031	51	5	31	65	5
50	10	169 480 780	0.047	62	3	34	77	6
63	10	169 480 781	0.086	77	3	41	99	7
75	10	169 480 782	0.175	92	4	49	125	9
90	10	169 480 783	0.292	110	5	57	150	10
110	10	169 480 784	0.495	134	5	69	180	11

The technical data are not binding. They neither constitute expressly warranted characteristics nor guaranteed properties nor a guaranteed durability. They are subject to modification. Our General Terms of Sale apply.

Georg Fischer Piping Systems Ltd, Postfach, CH-8201 Schaffhausen/Switzerland

Phone +41 -(0)52-631 1111

e-mail: info.ps@georgfischer.com

Internet: <http://www.gfps.com>