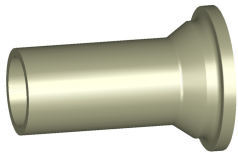


Data sheet

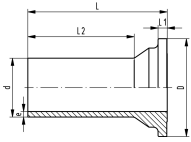
valid from: 7/27/23



PROGEF Standard Valve end 546 Pro and 543 Pro (G37) With butt fusion spigot long SDR11 metric

Model:

- Material: PP-H



d (mm)	PN (bar)	Code	Weight (kg)	e (mm)	L1 (mm)	D (mm)	L (mm)	L2 (mm)
20	10	167 482 956	0.012	2.3	4	38	69	53
25	10	167 482 957	0.020	2.3	5	44	76	58
32	10	167 482 958	0.029	2.9	5	53	76	58
40	10	167 482 959	0.048	3.7	5	65	82	61
50	10	167 482 960	0.082	4.6	6	77	91	63
63	10	167 482 961	0.154	5.8	7	99	110	77

The technical data are not binding. They neither constitute expressly warranted characteristics nor guaranteed properties nor a guaranteed durability. They are subject to modification. Our General Terms of Sale apply.

Georg Fischer Piping Systems Ltd, Postfach, CH-8201 Schaffhausen/Switzerland Phone +41 -(0)52-631 1111 e-mail: info.ps@georgfischer.com Internet: <http://www.gfps.com>