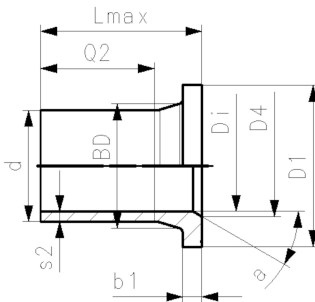
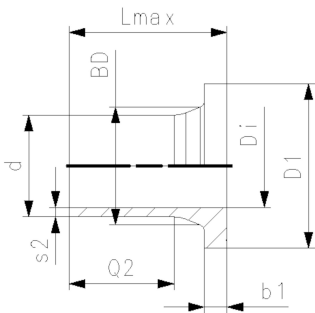


ELGEF Plus Flange adaptor PE100
d20-800mm / SDR11 / Long version / Combined jointing face: flat and serrated



Model:

- For IR, butt and electrofusion welding according to DVS 2207
- Type A: without chamfer
- Type B: with chamfer
- Type 567/578 suitable for plastic butterfly valves up to DN300
- Type 565 for DN 300, the ecoFIT special flange adapter ** SDR11 is required
- Type 038/039/044/065 for metal butterfly valves up to DN250 suitable
- Type 038/039/044/065 for metal butterfly valves DN 300; the ecoFIT special flange adapter ** SDR11 is required
- For Butterfly Valves above DN 350, the ecoFIT adapters for BV SDR11 are required
- For third-party products, please check the Insertion depth of the disc dimension
- Profile seal: d20-d800 NBR, EPDM, FKM
- Flat gasket: d20-d315 EPDM, FKM
- Pressure rating: 5 bar gas / 10 bar water
- Please refer to the Online Tool: Perfect Flange Connection - GF Piping Systems (gfps.com)

* For electrofusion welding, according to DVS 2207 and EN 1555

** FM 1613 approved - PN 15

*** Machined

d	Di	Type	DN	Code	Weight	Lmax	D1	D4	Q2	s2	b1	BD	
(mm)	(mm)		(mm)		(kg)	(mm)	(mm)	(mm)	(mm)	(mm)	(mm)	(mm)	
20	16	A	15	753 800 006	0.022	85.0	45		41.0	1.9	7	27	
*	20	16	A	15	753 800 031	0.060	85.0	45	41.0	3.0	7	27	
25	20	A	20	753 800 007	0.037	90.5	58		62.0	2.3	9	33	
*	25	20	A	20	753 800 032	0.041	90.5	58	62.0	3.0	9	33	
32	26	A	25	753 800 008	0.056	91.5	68		61.0	3.0	10	40	
40	32	A	32	753 800 009	0.081	94.5	78		61.5	3.7	11	50	
50	40	A	40	753 800 010	0.119	90.0	88		62.0	4.6	12	61	
63	51	A	50	753 800 011	0.187	98.0	102		69.0	5.8	14	75	
75	61	B	65	753 800 012	0.314	125.0	122	66	89.0	6.8	16	89	
**	90	73	B	80	753 800 013	0.471	140.0	138	78	103.0	8.2	17	105
**	110	90	B	100	753 800 014	0.718	160.0	158	100	114.0	10.0	18	125
**	125	102	B	100	753 800 015	0.883	170.0	158	114	125.0	11.4	25	132
**	140	114	B	125	753 800 016	1.348	200.0	188	127	147.0	12.7	25	155
**	160	130	B	150	753 800 017	1.718	200.0	212	151	147.0	14.6	25	175
**	180	147	B	150	753 800 018	2.035	200.0	212	158	170.0	16.4	30	183
**	200	163	B	200	753 800 019	2.899	200.0	268	203	128.0	18.2	32	232
**	225	184	B	200	753 800 020	3.208	200.0	268	210	138.0	20.5	32	235
**	250	202	B	250	753 800 021	4.800	220.0	320	252	129.0	22.7	35	285
**	280	229	B	250	753 800 022	4.925	231.0	320	265	150.0	25.4	35	291
**	315	257	B	300	753 800 023	7.135	239.0	370	300	162.0	28.6	35	335
**	355	284	B	350	753 800 024	10.400	267.0	430	342	170.0	32.0	40	373
**	400	320	B	400	753 800 025	14.500	292.0	482	387	185.0	36.0	46	427
**	450	360	B	500	753 800 026	23.700	330.0	585	400	205.0	41.0	60	514
**	500	400	B	500	753 800 027	27.100	351.0	585	442	220.0	46.0	60	530
	560	458	B	600	753 800 028	39.260	370.0	685	490	240.0	50.9	60	616
	630	515	B	600	753 800 029	44.260	390.0	685	545	260.0	57.0	60	644
***	710	581	A	700	753 800 030	56.400	400.0	800		280.0	64.5	60	737
***	800	652	A	800	753 800 033	72.700	400.0	905		280.0	74.0	65	840

The technical data are not binding. They neither constitute expressly warranted characteristics nor guaranteed properties nor a guaranteed durability. They are subject to modification. Our General Terms of Sale apply.