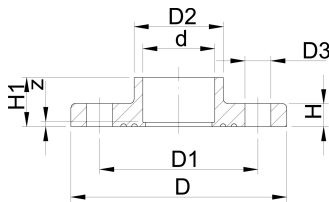


Fixed flange PVC-U metric
Combined jointing face: flat and serrated metric



Model:

- Solvent cement socket metric
- Connecting dimension: ISO 7005 PN 10, EN 1092 PN 10, DIN 2501 PN 10, BS 4504 PN 10
- **Bolt circle PN 10**

* Combined Flange, connecting dimensions EN1092 PN 10 and ANSI B 16.5 Class 150
 d75 - d110: bolt hole as long hole version
 AL: number of holes

d (mm)	DN (mm)	PN (bar)	d Type (inch)	Code	SP	Weight (kg)	
20	15	16	A	721 740 106	50	0.100	
25	20	16	A	721 740 107	0	0.130	
32	25	16	A	721 740 108	1	0.185	
40	32	16	A	721 740 109	1	0.306	
50	40	16	A	721 740 110	1	0.368	
63	50	16	A	721 740 111	1	0.513	
* 75	65	10	2 ½	B	721 740 112	10	0.536
* 90	80	10	3	B	721 740 113	16	0.710
* 110	100	10	4	B	721 740 114	12	0.941
* 140	125	10	5	B	721 740 116	1	1.395
* 160	150	10	6	B	721 740 117	1	2.029

d (mm)	D (mm)	D1 (mm)	D1 max. (mm)	D1 min. (mm)	D2 (mm)	D3 (mm)	z (mm)	H (mm)	H1 (mm)	AL	SC
20	95	65			27	14	3	12	19	4	M12
25	105	75			33	14	3	13	22	4	M12
32	115	85			41	14	3	14	25	4	M12
40	140	100			51	18	3	17	29	4	M16
50	150	110			62	18	3	17	34	4	M16
63	165	125			77	18	3	20	41	4	M16
* 75	185		140	144	91	19	3	21	47	4	M16
* 90	200		153	159	108	19	5	22	56	8	M16
* 110	220		181	191	131	24	5	24	66	8	M20
* 140	250	215			165	23	5	28	91	8	M20
* 160	285	240			188	23	5	30	91	8	M20

The technical data are not binding. They neither constitute expressly warranted characteristics nor guaranteed properties nor a guaranteed durability. They are subject to modification. Our General Terms of Sale apply.

Georg Fischer Piping Systems Ltd, Postfach, CH-8201 Schaffhausen/Switzerland

Phone +41 -(0)52-631 1111

e-mail: info.ps@georgfischer.com

Internet: <http://www.gfps.com>