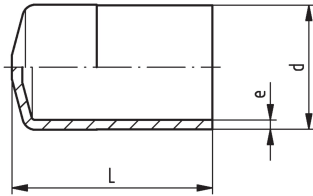


## SYGEF Plus end cap SDR21/PN16

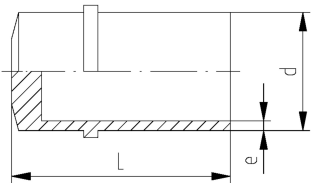
### Model:

- Material: PVDF-HP

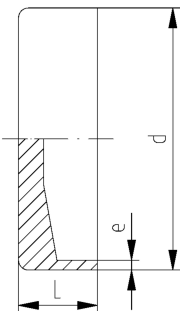


Type A

type B



type C



d (mm)	PN (bar)	FM	Code	GP	L (mm)	e (mm)	Type
20	16	BCF, IR	<b>735 968 106</b>	50	47	1.9	A
25	16	BCF, IR	<b>735 968 107</b>	40	47	1.9	A
32	16	BCF, IR	<b>735 968 108</b>	30	52	2.4	A
40	16	BCF, IR	<b>735 991 654</b>	0	59	2.4	B
50	16	BCF, IR	<b>735 991 655</b>	0	64	3.0	B
63	16	BCF, IR	<b>735 991 656</b>	0	69	3.0	B
75	16	IR	<b>735 991 657</b>	0	40	3.6	C
90	16	IR	<b>735 991 658</b>	10	40	4.3	C
110	16	IR	<b>735 991 659</b>	0	40	5.3	C

The technical data are not binding. They neither constitute expressly warranted characteristics nor guaranteed properties nor a guaranteed durability. They are subject to modification. Our General Terms of Sale apply.

Georg Fischer Piping Systems Ltd, Postfach, CH-8201 Schaffhausen/Switzerland

Phone +41 -(0)52-631 1111

e-mail: [info.ps@georgfischer.com](mailto:info.ps@georgfischer.com)

Internet: <http://www.gfps.com>