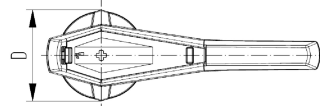
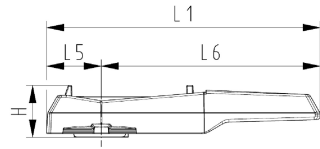
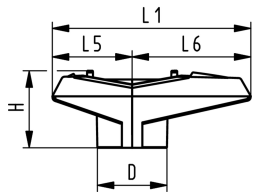
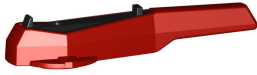


DN10/15 - 50



## Lever 546

### Model:

- Spare part for ball valve 546

DN (mm)	d (mm)	red (K01) Code	black (K02) Code	Weight (kg)	H (mm)	L5 (mm)	L1 (mm)	D (mm)	L6 (mm)
10 - 15	16 - 20	<b>167 484 088</b>	<b>167 484 076</b>	0.012	31	32	77	26	45
20	25	<b>167 484 089</b>	<b>167 484 077</b>	0.022	37	39	97	34	58
25	32	<b>167 484 090</b>	<b>167 484 078</b>	0.022	37	39	97	34	58
32	40	<b>167 484 091</b>	<b>167 484 079</b>	0.042	46	54	128	40	74
40	50	<b>167 484 092</b>	<b>167 484 080</b>	0.042	46	54	128	40	74
50	63	<b>167 484 093</b>	<b>167 484 081</b>	0.059	54	66	152	44	87
65	75	<b>167 484 094</b>	<b>167 484 082</b>	0.250	58	64	270	106	206
80	90	<b>167 484 095</b>	<b>167 484 083</b>	0.250	58	64	270	106	206
100	110	<b>167 484 096</b>	<b>167 484 084</b>	0.298	60	64	320	106	256

The technical data are not binding. They neither constitute expressly warranted characteristics nor guaranteed properties nor a guaranteed durability. They are subject to modification. Our General Terms of Sale apply.

Georg Fischer Piping Systems Ltd, Postfach, CH-8201 Schaffhausen/Switzerland

Phone +41 -(0)52-631 1111

e-mail: [info.ps@georgfischer.com](mailto:info.ps@georgfischer.com)

Internet: <http://www.gfps.com>