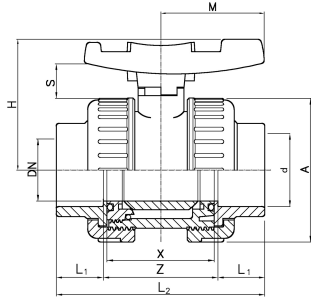




**Double union safeblock ISO PVC-U  
Ball valve with solvent cement sockets**



d (mm)	d (inch)	DN (mm)	PN (bar)	EPDM Code	SP	Weight (kg)	L1 (mm)	H (mm)	L2 (mm)	A (mm)	S (mm)	Z (mm)	X (mm)	M (mm)
16		10	16	VSA221160	1	0.125	14	53	76	50	19	48	42	40
20		15	16	VSA221200	50	0.130	16	53	80	50	19	48	41	40
25		20	16	VSA221250	45	0.205	19	60	91	59	19	53	48	45
32		25	16	VSA221320	50	0.295	22	67	102	68	21	58	54	51
40		32	16	VSA221400	36	0.435	26	79	120	80	25	68	62	59
50		40	16	VSA221500	24	0.690	31	90	140	94	27	78	72	70
63		50	16	VSA221630	13	1.160	38	107	169	115	29	93	86	84
75	2 ½	65	10	VSA221750	8	2.200	44	129	206	145	32	118	110	103
90		80	10	VSA221900	4	3.310	51	143	242	168	36	140	128	120
110		100	10	VSA221910	2	5.925	61	169	282	210	43	160	150	141

The technical data are not binding. They neither constitute expressly warranted characteristics nor guaranteed properties nor a guaranteed durability. They are subject to modification. Our General Terms of Sale apply.

Georg Fischer Piping Systems Ltd, Postfach, CH-8201 Schaffhausen/Switzerland

Phone +41 -(0)52-631 1111

e-mail: [info.ps@georgfischer.com](mailto:info.ps@georgfischer.com)

Internet: <http://www.gfps.com>