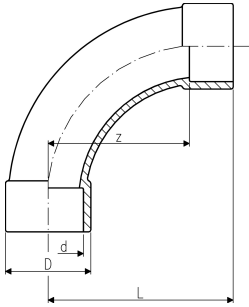


# Data sheet

valid from: 7/23/23



## TP Bend 90° PVC-U metric



d (mm)	d (inch)	PN (bar)	Code	SP	Weight (kg)	L (mm)	D (mm)	z (mm)
20		16	<b>RVOCUI200</b>	1	0.041	56	27	40
25		16	<b>RVOCUI250</b>	1	0.051	69	33	50
32		16	<b>RVOCUI320</b>	1	0.073	86	38	64
40		16	<b>RVOCUI400</b>	1	0.131	106	47	80
50		16	<b>RVOCUI500</b>	1	0.298	131	61	100
63		16	<b>RVOCUI630</b>	1	0.516	164	76	126
75	2 ½	16	<b>RVOCUI750</b>	20	0.797	194	90	150
90		16	<b>RVOCUI900</b>	12	1.334	231	108	180
110		16	<b>RVOCUI910</b>	6	2.728	281	137	220

The technical data are not binding. They neither constitute expressly warranted characteristics nor guaranteed properties nor a guaranteed durability. They are subject to modification. Our General Terms of Sale apply.

Georg Fischer Piping Systems Ltd, Postfach, CH-8201 Schaffhausen/Switzerland Phone +41 -(0)52-631 1111 e-mail:  
info.ps@georgfischer.com Internet: <http://www.gfps.com>