

Flanges PVC-U

Model:

- For socket systems metric and BS
- Metric: ISO 7005, EN 1092, ISO 9624
- ASME: ANSI/ASME B 16.5 class 150, ASTM D2024, BS 1560, BS EN 1759
- Maximum medium- or ambient temperature 45 °C

AL: number of holes

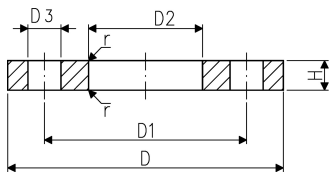
¹⁾ Not for BS

	d (mm)	DN (mm)	Size (inch)	PN (bar)	Standard	Bolt / circle	Design	Code	SP	Weight (kg)
	16	10	3/8	10	Metric	PN10	Socket	721 700 005	100	0.053
	20	15	1/2	10	Metric	PN10	Butt/Socket	721 700 006	90	0.067
	25	20	3/4	10	Metric	PN10	Butt/Socket	721 700 007	50	0.092
	32	25	1	10	Metric	PN10	Butt/Socket	721 700 008	40	0.133
	40	32	1 1/4	10	Metric	PN10	Butt/Socket	721 700 009	25	0.198
	50	40	1 1/2	10	Metric	PN10	Butt/Socket	721 700 010	20	0.247
	63	50	2	10	Metric	PN10	Butt/Socket	721 700 011	30	0.312
	75	65	2 1/2	10	Metric	PN10	Butt/Socket	721 700 012	25	0.376
	90	80	3	10	Metric	PN10	Socket	721 700 013	20	0.464
	110	100	4	10	ASME	class 150	Socket	161 483 180	30	0.538
1	110	100	4	10	Metric	PN10	Socket	721 700 014	30	0.543
	125	125	4 1/2	10	Metric	PN10	Socket	721 700 015	12	0.904
	140	125	5	10	Metric	PN10	Socket	721 700 016	12	0.758
1	160	150	6	10	Metric	PN10	Socket	721 700 017	5	1.009
	200	200	7	10	Metric	PN10	Socket	721 700 019	8	1.669
	225	200	8	10	Metric	PN10	Socket	721 700 020	8	1.377
	250	250	9	6	Metric	PN10	Socket	721 700 021	1	2.376
	250	225	9	6	Metric	PN10	Socket	721 700 136	1	1.800
	280	250	10	6	Metric	PN10	Socket	721 700 137	1	1.746
	315	300	12	6	Metric	PN10	Socket	721 700 138	1	2.349
	355	350	14	6	Metric	PN10	Socket	721 700 139	1	3.485
	400	400	16	6	Metric	PN10	Socket	721 700 140	1	4.526
	20	15	1/2	10	ASME	class 150	Socket	721 702 206	90	0.068
	25	20	3/4	10	ASME	class 150	Socket	721 702 207	50	0.090
	32	25	1	10	ASME	class 150	Socket	721 702 208	40	0.128
	40	32	1 1/4	10	ASME	class 150	Socket	721 702 209	25	0.203
	50	40	1 1/2	10	ASME	class 150	Socket	721 702 210	20	0.238
	63	50	2	10	ASME	class 150	Socket	721 702 211	30	0.302
	75	65	2 1/2	10	ASME	class 150	Socket	721 702 212	27	0.369
	90	80	3	10	ASME	class 150	Socket	721 702 213	20	0.509
	110	100	4	10	ASME	class 150	Socket	721 702 214	30	0.516
	140	125	5	10	ASME	class 150	Socket	721 702 216	12	0.737
	160	150	6	10	ASME	class 150	Socket	721 702 217	5	1.910
	225	200	8	10	ASME	class 150	Socket	721 702 220	8	1.360

	D (mm)	D1 (mm)	D2 (mm)	D3 (mm)	H (mm)	r (mm)	AL	SC
	90	60	23	14	10	1	4	M12
	95	65	28	14	11	1	4	M12
	105	75	34	14	12	2	4	M12
	115	85	42	14	14	2	4	M12
	140	100	51	18	15	2	4	M16
	150	110	62	18	16	2	4	M16
	165	125	78	18	18	3	4	M16
	185	145	92	18	19	3	4	M16
	200	160	110	18	20	3	8	M16
	220	190	133	19	22	3	8	
1	220	180	133	18	22	3	8	M16
	250	210	150	18	26	5	8	M16

Data sheet

valid from: 9/15/23



	D	D1	D2	D3	H	r	AL	SC
	(mm)	(mm)	(mm)	(mm)	(mm)	(mm)		
1	250	210	167	18	26	4	8	M16
	285	240	190	22	28	4	8	M20
	340	295	226	22	32	4	8	M20
	340	295	250	22	32	4	8	M20
	395	350	277	22	36	4	12	M20
	370	325	277	22	36	4	8	M20
	395	350	310	22	36	4	12	M20
	445	400	348	22	36	4	12	M20
	505	460	388	22	38	5	16	M20
	565	515	442	26	42	5	16	M24
	95	60	28	16	11	1	4	
	105	70	34	16	12	2	4	
	115	79	42	16	14	2	4	
	140	89	51	16	15	2	4	
	150	98	62	16	16	2	4	
	165	121	78	19	18	3	4	
	185	140	92	19	19	3	4	
	200	152	110	19	20	3	4	
	220	190	138	19	22	3	8	
	250	216	167	22	26	4	8	
	285	241	200	22	28	4	8	
	340	298	250	22	32	4	8	

The technical data are not binding. They neither constitute expressly warranted characteristics nor guaranteed properties nor a guaranteed durability. They are subject to modification. Our General Terms of Sale apply.

Georg Fischer Piping Systems Ltd, Postfach, CH-8201 Schaffhausen/Switzerland Phone +41 -(0)52-631 1111 e-mail: info.ps@georgfischer.com Internet: <http://www.gfps.com>