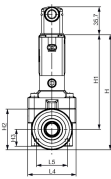
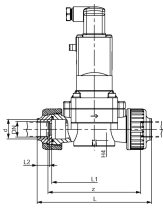
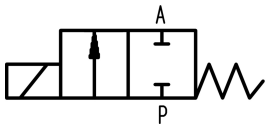




**Solenoid valve type 165 PVC-U**  
**Straight-through valve 2/2-way/110V 50Hz/60Hz**

**Model:**

- PN 0.5-6bar
- Material PVC-U: with solvent cement socket metric
- Protection class IP 65
- Electrical connection: cable plug
- With manual override
- Circuit function A: FC, closed in rest position



| d<br>(mm) | DN<br>(mm) | Size<br>(inch) | PN<br>(bar) | kv-value<br>( $\Delta p=1$ bar)<br>(L/min) | PVC-U<br>EPDM<br>Code | PVC-U FKM<br>Code  |
|-----------|------------|----------------|-------------|--|-----------------------|--------------------|
| 20        | 15         | ½              | 6           | 83   | <b>199 165 042</b>    | <b>199 165 032</b> |
| 25        | 20         | ¾              | 6           | 100  | <b>199 165 043</b>    | <b>199 165 033</b> |
| 32        | 25         | 1              | 6           | 233  | <b>199 165 044</b>    | <b>199 165 034</b> |
| 40        | 32         | 1 ¼            | 6           | 267  | <b>199 165 045</b>    |                    |
| 50        | 40         | 1 ½            | 6           | 500  | <b>199 165 046</b>    |                    |
| 63        | 50         | 2              | 6           | 600  | <b>199 165 047</b>    |                    |

| d<br>(mm) | H<br>(mm) | H1<br>(mm) | H2<br>(mm) | H3<br>(mm) | H4<br>(mm) | L<br>(mm) | L1<br>(mm) | L2<br>(mm) | L4<br>(mm) | L5<br>(mm) | z<br>(mm) |
|-----------|-----------|------------|------------|------------|------------|-----------|------------|------------|------------|------------|-----------|
| 20        | 148       | 122        | 53         | 22         | 8          | 148       | 110        | 16         | 63         | 40         | 116       |
| 25        | 148       | 122        | 53         | 22         | 8          | 154       | 110        | 19         | 62         | 40         | 116       |
| 32        | 175       | 137        | 76         | 31         | 15         | 190       | 141        | 22         | 85         | 45         | 147       |
| 40        | 175       | 137        | 76         | 31         | 15         | 198       | 141        | 26         | 85         | 45         | 147       |
| 50        | 212       | 160        | 105        | 42         | 15         | 254       | 192        | 31         | 115        | 45         | 198       |
| 63        | 212       | 160        | 105        | 42         | 15         | 268       | 192        | 38         | 115        | 45         | 198       |

The technical data are not binding. They neither constitute expressly warranted characteristics nor guaranteed properties nor a guaranteed durability. They are subject to modification. Our General Terms of Sale apply.

Georg Fischer Piping Systems Ltd, Postfach, CH-8201 Schaffhausen/Switzerland

Phone +41 -(0)52-631 1111

e-mail: [info.ps@georgfischer.com](mailto:info.ps@georgfischer.com)

Internet: <http://www.gfps.com>