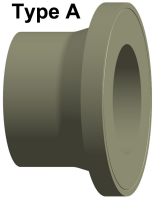
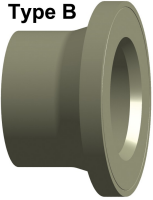


Type A



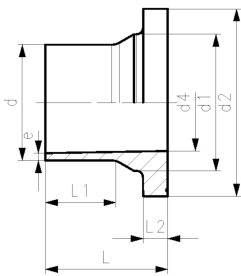
Type B



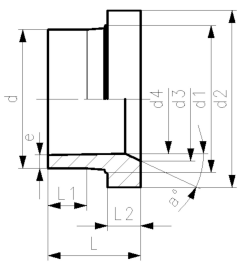
Type C



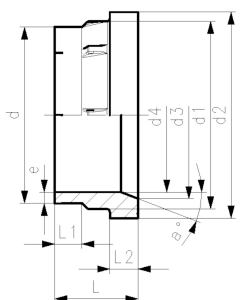
Type A



Type B



Type C



PROGEF Standard Flange adaptor
SDR11/PN10 Combined jointing face: flat and serrated

Model:

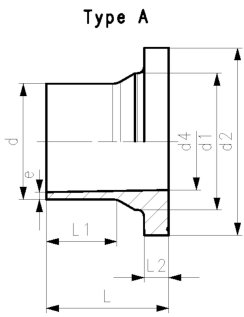
- Material: PP-H
 - Conventional butt-welding according to DVS 2207
 - IR- Infrared welding compatible
 - Suitable for flange connections to metric (from d110 also to ANSI/ASME B16.5)
 - Up to d315, suitable for butterfly valve type 567/578 and 038/039. Above use PROGEF Standard adaptor for butterfly valves SDR11 (d355-d500)
 - Gasket: profile flange gasket EPDM No. 48 44 07, FKM No. 49 44 07
- * Material: PP-R, not suitable for butterfly valves

d	DN	SDR	PN	FM	Type	Code	Weight	
(mm)	(mm)		(bar)				(kg)	
20	15	11	10	IR	A	727 798 706	0.015	
25	20	11	10	IR	A	727 798 707	0.029	
32	25	11	10	IR	A	727 798 708	0.042	
40	32	11	10	IR	A	727 798 709	0.061	
50	40	11	10	IR	A	727 798 710	0.091	
63	50	11	10	IR	A	727 798 711	0.144	
75	65	11	10	IR	B	727 798 712	0.243	
90	80	11	10	IR	B	727 798 713	0.324	
110	100	11	10	IR	B	727 798 714	0.441	
125	100	11	10	IR	B	727 798 715	0.520	
140	125	11	10	IR	B	727 798 716	0.800	
160	150	11	10	IR	C	727 798 317	0.927	
180	150	11	10	IR	B	727 798 318	1.026	
200	200	11	10	IR	C	727 798 319	1.652	
225	200	11	10	IR	C	727 798 320	1.665	
250	250	11	10	IR	C	727 798 521	2.630	
280	250	11	10	IR	C	727 798 322	2.521	
315	300	11	10	IR	C	727 798 523	3.247	
*	355	350	11	10		C	727 798 324	6.600
*	400	400	11	10		C	727 798 325	9.100
*	450	500	11	10		C	727 798 326	17.300
*	500	500	11	10		C	727 798 327	18.400

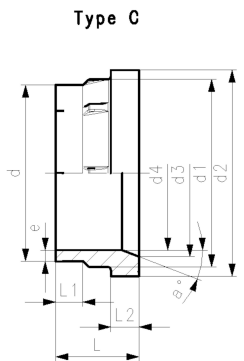
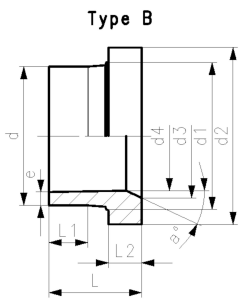
d	d1	d2	d3	d4	L	L1	L2	e	a°
(mm)	(mm)	(mm)	(mm)	(mm)	(mm)	(mm)	(mm)	(mm)	
20	26	45		16	50	29	7	1.9	
25	32	58		20	52	27	9	2.3	
32	40	68		26	54	28	10	2.9	
40	49	78		32	56	25	11	3.7	
50	60	88		40	62	32	12	4.6	
63	75	102		51	68	38	14	5.8	
75	89	122	66	61	80	43	16	6.9	30
90	105	138	78	73	80	41	17	8.2	30
110	125	158	100	90	80	40	18	10.0	30
125	132	158	114	102	82	35	25	11.4	25
140	155	188	127	114	89	39	25	12.8	27
160	175	212	151	127	92	40	25	14.6	30
180	180	212	154	148	92	40	30	17.4	30
200	232	268	203	174	100	35	32	19.3	30
225	235	268	210	196	100	35	32	21.7	30
250	285	320	252	203	120	45	36	24.0	
280	291	320	265	228	120	45	37	26.8	30
315	338	370	300	256	150	50	52	30.2	22

Data sheet

valid from: 11/2/23



	d (mm)	d1 (mm)	d2 (mm)	d3 (mm)	d4 (mm)	L (mm)	L1 (mm)	L2 (mm)	e (mm)	a°
*	355	373	430	342	284	162	70	40	33.9	45
*	400	427	482	387	320	172	70	46	38.2	45
*	450	514	585	400	360	225	105	60	43.0	15
*	500	530	585	442	400	231	105	60	47.8	15



The technical data are not binding. They neither constitute expressly warranted characteristics nor guaranteed properties nor a guaranteed durability. They are subject to modification. Our General Terms of Sale apply.

Georg Fischer Piping Systems Ltd, Postfach, CH-8201 Schaffhausen/Switzerland Phone +41 -(0)52-631 1111 e-mail: info.ps@georgfischer.com Internet: <http://www.gfps.com>