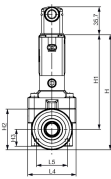
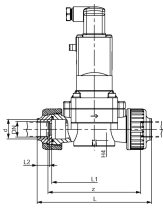
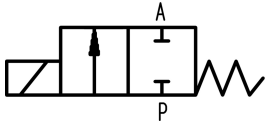




Solenoid valve type 165 PVC-U
Straight-through valve 2/2-way/24V DC

Model:

- PN 0.5-6bar
- Material PVC-U: with solvent cement socket metric
- Protection class IP 65
- Electrical connection: cable plug
- With manual override
- Circuit function A: FC, closed in rest position



d (mm)	DN (mm)	Size (inch)	PN (bar)	kv-value ($\Delta p=1$ bar) (L/min)	PVC-U EPDM Code	PVC-U FKM Code
20	15	½	6	83	199 165 022	199 165 072
25	20	¾	6	100	199 165 023	199 165 073
32	25	1	6	233	199 165 024	199 165 074
40	32	1 ¼	6	267	199 165 025	199 165 075
50	40	1 ½	6	500	199 165 026	199 165 076
63	50	2	6	600	199 165 027	199 165 077

d (mm)	H (mm)	H1 (mm)	H2 (mm)	H3 (mm)	H4 (mm)	L (mm)	L1 (mm)	L2 (mm)	L4 (mm)	L5 (mm)	z (mm)
20	148	122	53	22	8	148	110	16	63	40	116
25	148	122	53	22	8	154	110	19	62	40	116
32	175	137	76	31	15	190	141	22	85	45	147
40	175	137	76	31	15	198	141	26	85	45	147
50	212	160	105	42	15	254	192	31	115	45	198
63	212	160	105	42	15	268	192	38	115	45	198

The technical data are not binding. They neither constitute expressly warranted characteristics nor guaranteed properties nor a guaranteed durability. They are subject to modification. Our General Terms of Sale apply.

Georg Fischer Piping Systems Ltd, Postfach, CH-8201 Schaffhausen/Switzerland

Phone +41 -(0)52-631 1111

e-mail: info.ps@georgfischer.com

Internet: <http://www.gfps.com>