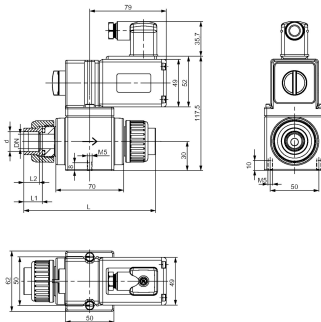
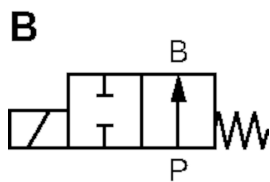
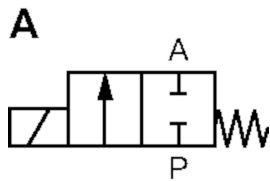




## Solenoid valve type 160 PVC-U Straight through valve 2/2-way

### Model:

- Material: PVC-U
- With solvent cement socket metric
- With manual override
- Electrical connection: cable plug
- Protection class IP 65
- Circuit function A: FC, closed in rest position
- Circuit function B: FO, opened in rest position



d (mm)	DN (mm)	DN Seat (mm)	PN (bar)	kv-value ( $\Delta p=1$ bar) (L/min)	Voltage	Function	EPDM Code	FKM Code
16	10	10	3.0	33	230V 50Hz $\pm$ 10%	A	199 160 010	199 160 005
20	15	10	3.0	33	230V 50Hz $\pm$ 10%	A	199 160 011	199 160 006
20	15	15	1.0	75	230V 50Hz $\pm$ 10%	A	199 160 012	199 160 007
25	20	15	1.0	75	230V 50Hz $\pm$ 10%	A	199 160 013	199 160 008
25	20	20	0.5	100	230V 50Hz $\pm$ 10%	A	199 160 014	199 160 009
16	10	10	2.0	33	230V 50Hz $\pm$ 10%	B	199 160 025	199 160 020
20	15	10	1.0	33	230V 50Hz $\pm$ 10%	B	199 160 026	199 160 021
20	15	15	1.0	75	230V 50Hz $\pm$ 10%	B	199 160 027	199 160 022
25	20	15	1.0	75	230V 50Hz $\pm$ 10%	B	199 160 028	199 160 023
25	20	20	0.5	100	230V 50Hz $\pm$ 10%	B	199 160 029	199 160 024
16	10	10	3.0	33	24V AC/DC	A	199 160 370	199 160 365
20	15	10	3.0	33	24V AC/DC	A	199 160 371	199 160 366
20	15	15	1.0	75	24V AC/DC	A	199 160 372	199 160 367
25	20	15	1.0	75	24V AC/DC	A	199 160 373	
25	20	20	0.5	100	24V AC/DC	A	199 160 374	199 160 369
16	10	10	2.0	33	24V AC/DC	B	199 160 385	199 160 380
20	15	10	2.0	33	24V AC/DC	B	199 160 386	199 160 381
25	20	20	0.5	100	24V AC/DC	B	199 160 389	

d (mm)	DN (mm)	L (mm)	L1 (mm)	L2 (mm)
16	10	130	17	14
20	15	134	19	16
20	15	136	19	16
25	20	142	22	19
25	20	144	22	19
16	10	130	17	14
20	15	134	19	16
20	15	136	19	16
25	20	142	19	19
25	20	144	22	19
16	10	130	17	14
20	15	134	19	16
20	15	136	19	16
25	20	142	22	19
25	20	144	22	19
16	10	130	17	14
20	15	134	19	16
25	20	144	22	19

The technical data are not binding. They neither constitute expressly warranted characteristics nor guaranteed properties nor a guaranteed durability. They are subject to modification. Our General Terms of Sale apply.

# Data sheet

valid from: 2/1/24



---

Georg Fischer Piping Systems Ltd, Postfach, CH-8201 Schaffhausen/Switzerland Phone +41 -(0)52-631 1111 e-mail:  
info.ps@georgfischer.com Internet: <http://www.gfps.com>