



SYGEF Plus installation fitting
SDR33/PN10
High Purity clean-room product ISO Class 5 (100)

Model:

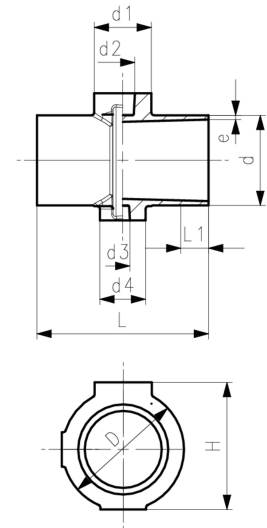
- Material: PVDF-HP
- Injection-moulded version

Range of use:

- compatible with all signet sensors excepting flow sensors

Note:

Thread needs to be milled, HAND HELD DRILLING MUST NOT BE DONE



d (mm)	PN (bar)	FM	Rp/NPT (inch)	Code	Weight (kg)
140	10	IR	¼ - 1	735 918 716	0.967
160	10	IR	¼ - 1	735 918 717	1.141
225	10	IR	¼ - 1	735 918 720	1.845

d (mm)	L (mm)	L1 (mm)	d1 (mm)	d2 (mm)	d3 (mm)	d4 (mm)	D (mm)	H (mm)	e (mm)
140	155	40	63	17	10	50	171	171	4.3
160	155	40	63	17	10	50	189	191	4.9
225	155	40	63	17	10	50	248	256	6.9

The technical data are not binding. They neither constitute expressly warranted characteristics nor guaranteed properties nor a guaranteed durability. They are subject to modification. Our General Terms of Sale apply.

Georg Fischer Piping Systems Ltd, Postfach, CH-8201 Schaffhausen/Switzerland

Phone +41 -(0)52-631 1111

e-mail: info.ps@georgfischer.com

Internet: <http://www.gfps.com>