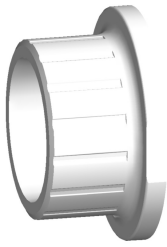


Data sheet

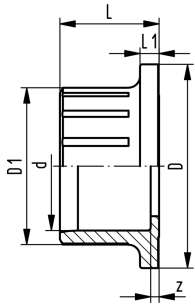
valid from: 7/27/23



SYGEF Standard Valve end 546 Pro and 543 Pro (G50) With fusion socket metric

Model:

- Material: PVDF



d (mm)	PN (bar)	Code	Weight (kg)	D (mm)	D1 (mm)	L (mm)	L1 (mm)	z (mm)
16	16	175 483 025	0.013	38	23	19	4	5
20	16	175 483 026	0.013	38	27	20	4	5
25	16	175 483 027	0.014	44	33	22	5	6
32	16	175 483 028	0.032	53	41	24	5	6
40	16	175 483 029	0.052	65	51	26	5	7
50	16	175 483 030	0.094	77	62	29	6	8
63	16	175 483 031	0.180	99	77	34	7	8
75	16	175 483 032	0.324	125	92	49	9	20
90	16	175 483 033	0.527	150	110	57	10	24
110	16	175 483 034	0.909	180	134	69	11	30

The technical data are not binding. They neither constitute expressly warranted characteristics nor guaranteed properties nor a guaranteed durability. They are subject to modification. Our General Terms of Sale apply.

Georg Fischer Piping Systems Ltd, Postfach, CH-8201 Schaffhausen/Switzerland Phone +41 -(0)52-631 1111 e-mail:
info.ps@georgfischer.com Internet: <http://www.gfps.com>