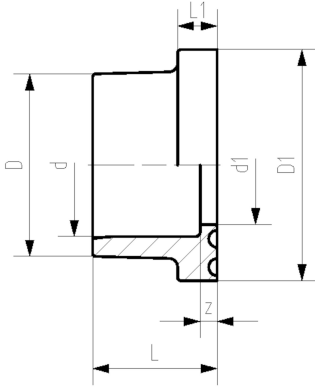




PROGEF Standard Flange adaptor PN10 Jointing face flat/serrated

Model:

- Material: PP-H
- Connection: according to EN ISO 15494-1
- Counterpart: flange adaptor flat/serrated or with O-ring groove
- Flanges: PP - steel, No. 27 70 02, PP-V, No. 27 70 04
- ANSI: profile flange gasket EPDM No. 48 44 05, FKM No. 49 44 05
- ISO: profile flange gasket EPDM No. 48 44 07, FKM No. 49 44 07



d (mm)	DN (mm)	Standard	PN (bar)	Code	Weight (kg)	L (mm)	L1 (mm)	D (mm)	D1 (mm)	d1 (mm)	z (mm)
20	15	Metric/ANSI	10	727 790 206	0.011	19	7	27	45	16	5
25	20	Metric	10	727 790 207	0.022	21	9	33	58	21	5
25	20	ANSI	10	727 790 257	0.018	21	7	33	54	21	5
32	25	Metric	10	727 790 208	0.033	23	10	41	68	28	5
32	25	ANSI	10	727 790 258	0.026	23	7	41	63	28	5
40	32	Metric	10	727 790 209	0.046	25	11	50	78	36	5
40	32	ANSI	10	727 790 259	0.041	25	8	50	73	36	5
50	40	Metric	10	727 790 210	0.060	28	12	61	88	45	5
50	40	ANSI	10	727 790 260	0.055	28	8	61	82	45	5
63	50	Metric/ANSI	10	727 790 211	0.090	32	14	76	102	57	5
75	65	Metric/ANSI	10	727 790 212	0.155	36	16	90	122	69	5
90	80	Metric	10	727 790 213	0.204	42	17	108	138	84	7
90	80	ANSI	10	727 790 263	0.189	36	16	108	133	84	5
110	100	Metric/ANSI	10	727 790 214	0.286	48	18	131	158	100	7

The technical data are not binding. They neither constitute expressly warranted characteristics nor guaranteed properties nor a guaranteed durability. They are subject to modification. Our General Terms of Sale apply.

Georg Fischer Piping Systems Ltd, Postfach, CH-8201 Schaffhausen/Switzerland Phone +41 -(0)52-631 1111 e-mail: info.ps@georgfischer.com Internet: <http://www.gfps.com>