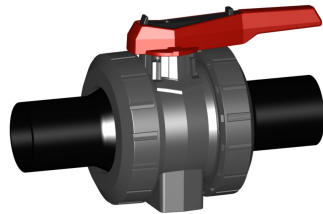


DN10/15 - 50



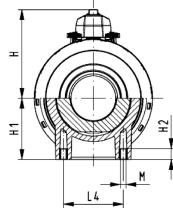
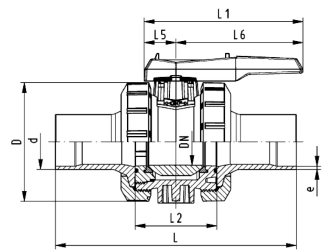
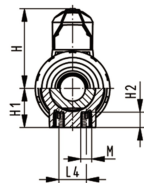
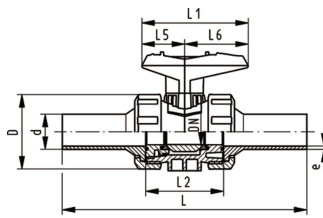
**ecoFIT**  
**Ball valve type 546**  
**With mounting inserts**  
**With butt fusion spigots long**  
**PE100 SDR11 metric**

**Model:**

- Material: PVC-U/PE
- For easy installation and removal
- Ball seat PTFE
- Integrated stainless steel mounting inserts
- Valve end and union nut are **not compatible** with type 346 (DN10/15-50) and type 370 (DN65-100)

**Option:**

- Individual configuration of the valve
- Multifunctional module with integrated limit switches
- Pneumatic or electric actuators from GF



| d<br>(mm) | DN<br>(mm) | PN<br>(bar) | kv-value<br>( $\Delta p=1$ bar)<br>(L/min) | EPDM<br>Code | Weight<br>(kg) | FKM<br>Code | Weight<br>(kg) |
|-----------|------------|-------------|--|--------------|----------------|-------------|----------------|
| 20        | 15         | 16          | 185  | 161 546 822  | 0.162          | 161 546 832 | 0.150          |
| 25        | 20         | 16          | 350  | 161 546 823  | 0.248          | 161 546 833 | 0.220          |
| 32        | 25         | 16          | 700  | 161 546 824  | 0.362          | 161 546 834 | 0.310          |
| 40        | 32         | 16          | 1000                                       | 161 546 825  | 0.550          | 161 546 835 | 0.550          |
| 50        | 40         | 16          | 1600                                       | 161 546 826  | 0.886          | 161 546 836 | 0.750          |
| 63        | 50         | 16          | 3100                                       | 161 546 827  | 1.630          | 161 546 837 | 1.360          |
| 75        | 65         | 16          | 5000                                       | 161 546 828  | 3.651          | 161 546 838 | 5.000          |
| 90        | 80         | 16          | 7000                                       | 161 546 829  | 6.840          | 161 546 839 | 7.500          |
| 110       | 100        | 16          | 11000                                      | 161 546 830  | 8.860          | 161 546 840 | 11.800         |

| d<br>(mm) | D<br>(mm) | H<br>(mm) | H1<br>(mm) | H2<br>(mm) | L<br>(mm) | L1<br>(mm) | L2<br>(mm) | L4<br>(mm) | L5<br>(mm) | L6<br>(mm) | M   | e<br>(mm) | closest<br>inch<br>(inch) |
|-----------|-----------|-----------|------------|------------|-----------|------------|------------|------------|------------|------------|-----|-----------|---------------------------|
| 20        | 50        | 57        | 27         | 12         | 193       | 77         | 56         | 25         | 32         | 45         | M6  | 1.9       | ½                         |
| 25        | 58        | 67        | 30         | 12         | 216       | 97         | 65         | 25         | 39         | 58         | M6  | 2.3       | ¾                         |
| 32        | 68        | 73        | 36         | 12         | 223       | 97         | 71         | 25         | 39         | 58         | M6  | 2.9       | 1                         |
| 40        | 84        | 90        | 44         | 15         | 249       | 128        | 85         | 45         | 54         | 74         | M8  | 3.7       | 1 ¼                       |
| 50        | 97        | 97        | 51         | 15         | 271       | 128        | 89         | 45         | 54         | 74         | M8  | 4.6       | 1 ½                       |
| 63        | 124       | 116       | 64         | 15         | 321       | 152        | 101        | 45         | 66         | 87         | M8  | 5.8       | 2                         |
| 75        | 166       | 149       | 85         | 15         | 386       | 270        | 136        | 70         | 64         | 206        | M8  | 6.8       | 2 ½                       |
| 90        | 200       | 161       | 105        | 15         | 421       | 270        | 141        | 70         | 64         | 206        | M8  | 8.2       | 3                         |
| 110       | 238       | 178       | 123        | 22         | 484       | 320        | 164        | 120        | 64         | 256        | M12 | 10.0      | 4                         |

The technical data are not binding. They neither constitute expressly warranted characteristics nor guaranteed properties nor a guaranteed durability. They are subject to modification. Our General Terms of Sale apply.

Georg Fischer Piping Systems Ltd, Postfach, CH-8201 Schaffhausen/Switzerland

Phone +41 -(0)52-631 1111

e-mail: [info.ps@georgfischer.com](mailto:info.ps@georgfischer.com)

Internet: <http://www.gfps.com>