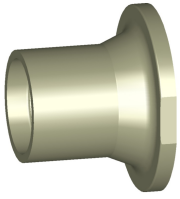


Data sheet

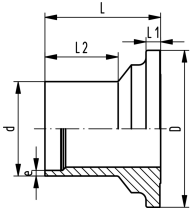
valid from: 7/27/23



PROGEF Standard
Valve end 546 Pro and 543 Pro (G36)
With butt fusion spigot IR-Plus® SDR17.6 metric

Model:

- Material: PP-H



| d (mm) | PN (bar) | FM | Code | Weight (kg) | D (mm) | L (mm) | L1 (mm) | L2 (mm) | e (mm) |
|-----------|-------------|----|--------------------|----------------|-----------|-----------|------------|------------|-----------|
| 40 | 6 | IR | 167 482 937 | 0.032 | 65 | 43 | 5 | 25 | 2.3 |
| 50 | 6 | IR | 167 482 938 | 0.050 | 77 | 51 | 6 | 25 | 2.9 |
| 63 | 6 | IR | 167 482 939 | 0.099 | 99 | 60 | 7 | 28 | 3.6 |
| 75 | 6 | IR | 167 482 940 | 0.189 | 125 | 65 | 9 | 41 | 4.3 |
| 90 | 6 | IR | 167 482 941 | 0.265 | 150 | 62 | 10 | 33 | 5.1 |
| 110 | 6 | IR | 167 482 942 | 0.418 | 180 | 69 | 11 | 37 | 6.3 |

The technical data are not binding. They neither constitute expressly warranted characteristics nor guaranteed properties nor a guaranteed durability. They are subject to modification. Our General Terms of Sale apply.

Georg Fischer Piping Systems Ltd, Postfach, CH-8201 Schaffhausen/Switzerland Phone +41 -(0)52-631 1111 e-mail:
info.ps@georgfischer.com Internet: <http://www.gfps.com>