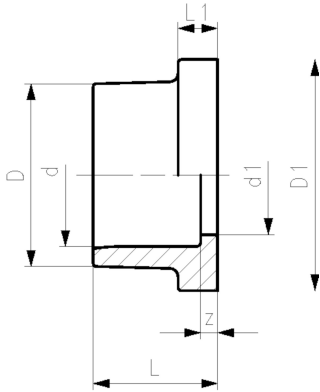




SYGEF Standard flange adaptor JIS
Joining face flat PN16

Model:

- Material: PVDF



d	DN	PN	Code	Weight	L	L1	D	D1	d1	z
(mm)	(mm)	(bar)		(kg)	(mm)	(mm)	(mm)	(mm)	(mm)	(mm)
20	15	16	735 800 106	0.013	19	6	27	34	16	3
25	20	16	735 800 107	0.020	21	7	33	41	21	3
32	25	16	735 800 108	0.030	23	7	41	50	28	3
40	32	16	735 800 109	0.047	25	8	50	60	36	3
50	40	16	735 800 110	0.070	28	8	61	72	45	3
63	50	16	735 800 111	0.115	32	9	75	89	57	3

The technical data are not binding. They neither constitute expressly warranted characteristics nor guaranteed properties nor a guaranteed durability. They are subject to modification. Our General Terms of Sale apply.

Georg Fischer Piping Systems Ltd, Postfach, CH-8201 Schaffhausen/Switzerland

Phone +41 -(0)52-631 1111

e-mail: info.ps@georgfischer.com

Internet: <http://www.gfps.com>