



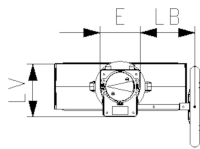
Wafer-style intermediate installation butterfly valve type 567 PVC-U
With gear box
Flange standard metric/ANSI/BS/JIS

Model:

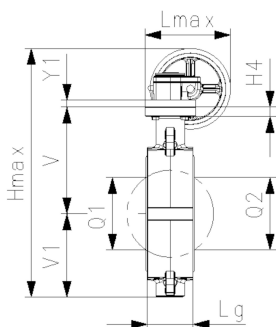
- Up to DN 300: Overall length according to EN558 (DN 50-200: line 25, DN250, 300 line 16), ISO 5752
- Connecting dimension: ISO 7005 PN 10, EN 1092 PN 10, DIN 2501 PN 10, ANSI/ASME B 16.5 Class 150, BS 1560: 1989, BS 4504, JIS B 2220

Note:

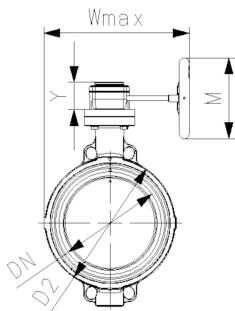
For some material combination (e.g. DN300 valves with PE/PP pipes) special flange adapters are needed. Please check the "Perfect flange connection tool" on www.gfps.com



d	Size	DN	PN	kv-value	EPDM	SP	Weight	FKM	SP	Weight
(mm)	(inch)	(mm)	(bar)	($\Delta p=1$ bar)	Code		(kg)	Code		(kg)
63	2	50	10	740	161 567 042	1	3.078	161 567 062	1	3.082
75	2 ½	65	10	1500	161 567 043	1	3.181	161 567 063	1	3.186
90	3	80	10	2400	161 567 044	1	3.346	161 567 064	1	3.353
110	4	100	10	3800	161 567 045	1	4.022	161 567 065	1	3.973
140	5	125	10	8600	161 567 046	1	4.185	161 567 066	1	4.544
160	6	150	10	11400	161 567 047	1	5.174	161 567 067	1	5.181
225	8	200	10	19900	161 567 048	1	7.072	161 567 068	1	8.339
280	10	250	10	34000	161 567 049	1	14.741	161 567 069	1	15.115
315	12	300	10	50000	161 567 050	1	19.254	161 567 070	1	35.000



d	Hmax	Lmax	Wmax	U	V	H4	V1	Lg	D2	Q1	Q2	k	Y	E
(mm)	(mm)	(mm)	(mm)	(inch)	(mm)	(mm)	(mm)	(mm)	(mm)	(mm)	(mm)	(mm)	(mm)	(mm)
63	319.4	169.1	240.2	90	133.3	23	78.8	45	104	40		125	61.2	80
75	332.3	169.1	247.3	90	139.9	23	85.1	46	115	54	35	145	61.2	80
90	344.1	169.1	249.4	90	145.6	23	91.2	49	131	67	50	160	61.2	80
110	379.4	169.1	261.5	90	166.4	23	105.7	56	161	88	74	180	61.2	80
140	406.1	169.1	274.5	90	180.0	23	118.8	64	187	113	97	210	61.2	80
160	427.2	169.1	288.5	90	189.0	23	130.9	72	215	139	123	240	61.2	80
225	476.1	169.1	267.0	90	210.5	23	158.3	73	267	178	169	295	61.2	80
280	613.0	212.6	329.0	125	262.6	23	206.1	113	329	210	207	350	68.4	100
315	657.4	212.6	380.4	125	284.3	23	228.8	113	379	256	253	400	68.4	100



d	Y1	M	LV	LB
(mm)	(mm)	(mm)	(mm)	(mm)
63		160	112.3	129.5
75		160	112.3	129.5
90		160	112.3	129.5
110		160	112.3	129.5
140		160	112.3	129.5
160		160	112.3	129.5
225		160	112.3	129.5
280	17	200	130.0	134.0
315	17	200	130.0	134.0

The technical data are not binding. They neither constitute expressly warranted characteristics nor guaranteed properties nor a guaranteed durability. They are subject to modification. Our General Terms of Sale apply.

Georg Fischer Piping Systems Ltd, Postfach, CH-8201 Schaffhausen/Switzerland

Phone +41 -(0)52-631 1111

e-mail: info.ps@georgfischer.com

Data sheet

valid from: 6/29/23



Internet: <http://www.gfps.com>